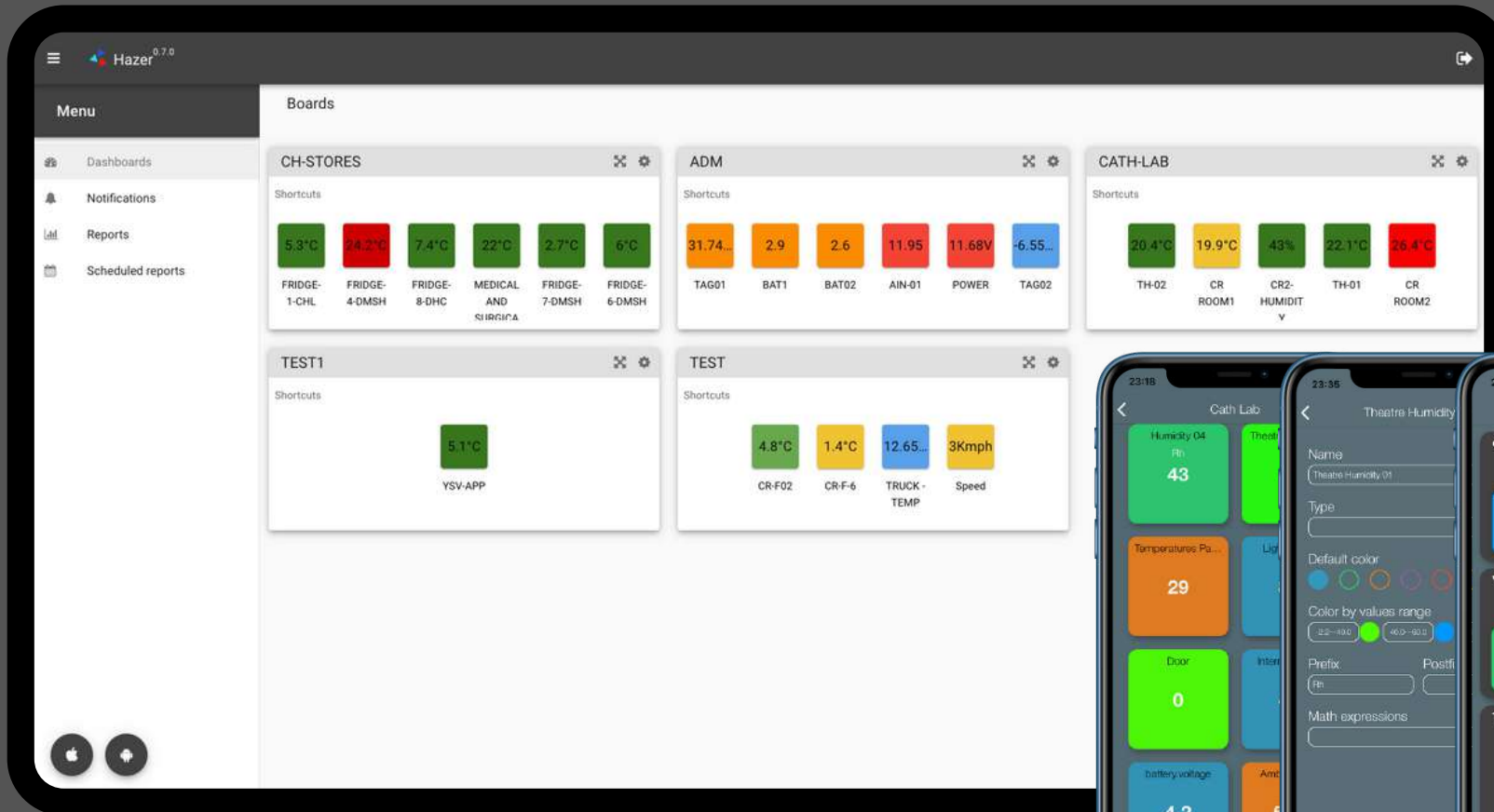


# Hazer®

A Better Way to Manage IOT Devices

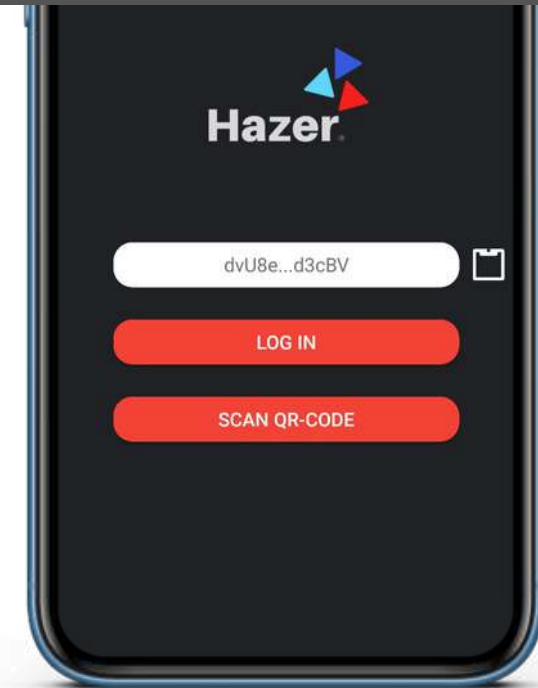


# Description

Monitoring Multiple Telematics Sensors? Want to keep an eye on critical environments on the go?

Hazer allows you to monitor a wide variety of sensors simultaneously - Temperature, Humidity, Door Sensors, Fuel Level, Light Sensors, CO2, Water, Parking Sensor or literary any sensor you can imagine!

That's not all - You can locate the IOT devices on the map, when equipped with GPS / GLONASS.



## All it takes is just two minutes...

- User Friendly interface enables you to enter your Auth Token.
- Create sensor widgets and assign them under dashboards to monitor each sensor's current status.
- Set threshold values to correspond with sensor widget color, so that it will be easier to identify status of the sensor.

# Ready in a few easy clicks

Configure settings



Select the sensors



Set the places



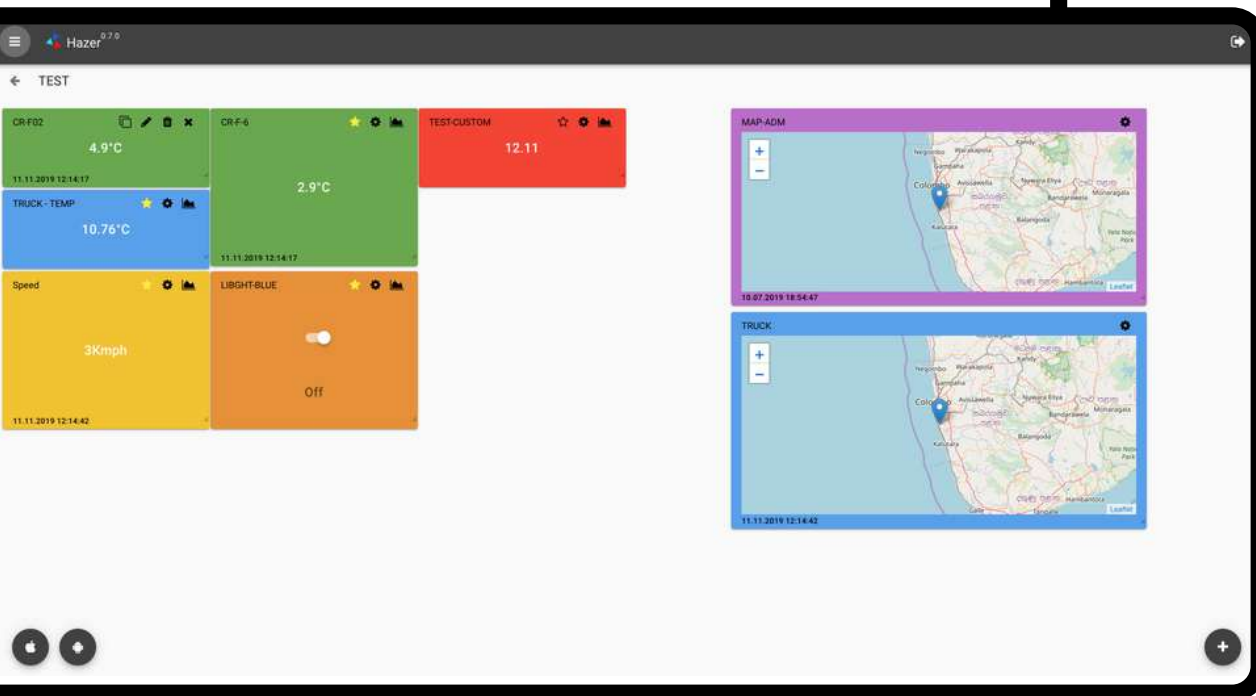
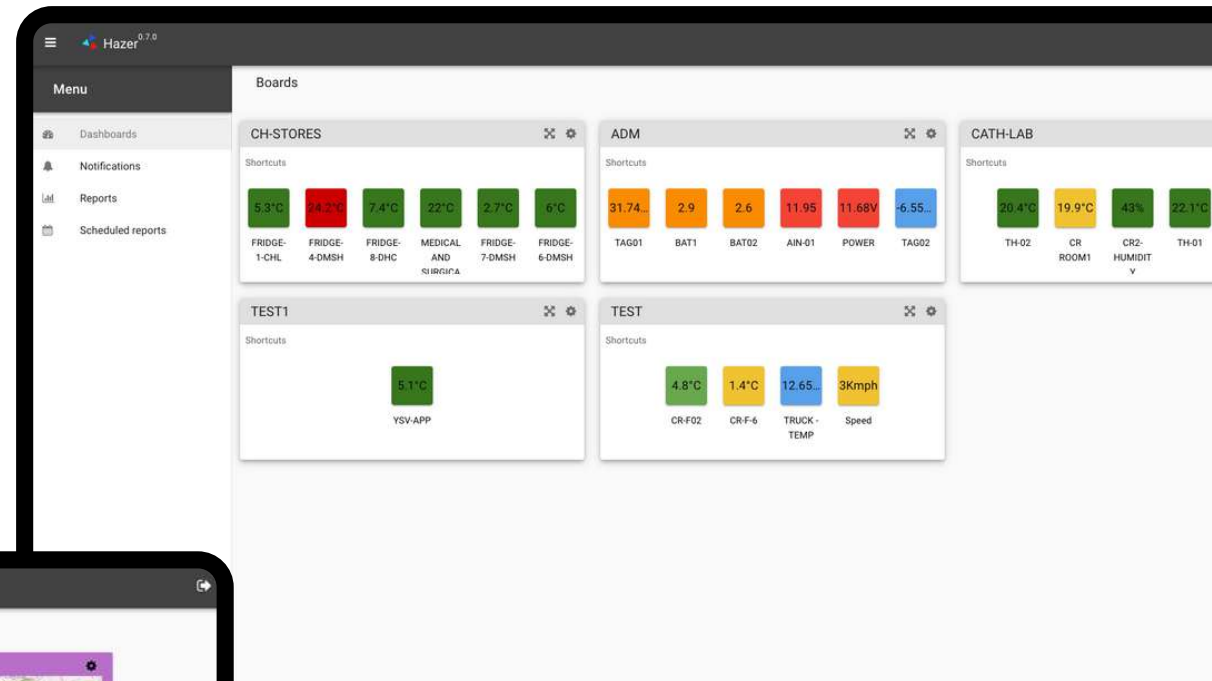
Start monitoring



# Web Interface

- User-friendly web based interface to configure and manage platform.
- Real-time synchronisation between mobile app and web interface both ways; web interface to mobile interface and vice-versa.

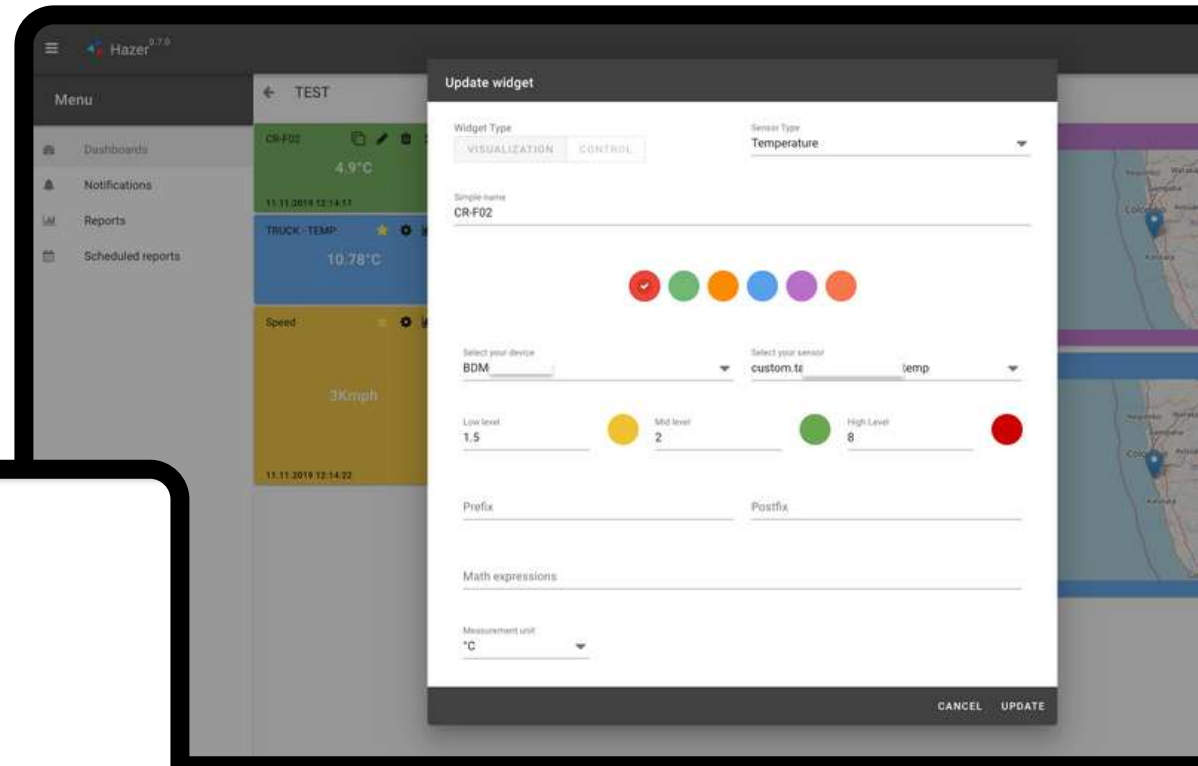
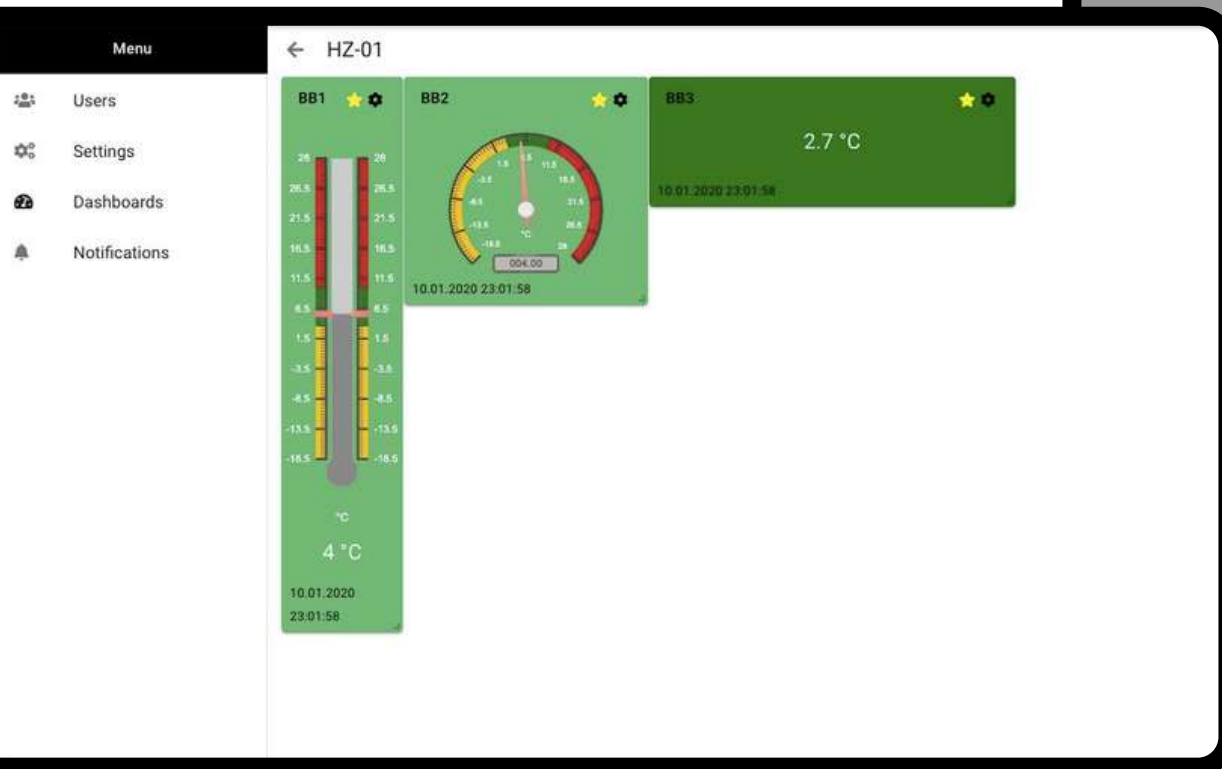
Multiple monitoring points on multiple entities on a single dashboard.



Focused view of a multiple monitoring points of an entity.

# Programmable Widgets

Program widgets for various applications as you need. There are no limits in number of sensors or notifications you can program.



Customize widgets as you need to best meet your requirements and the application.

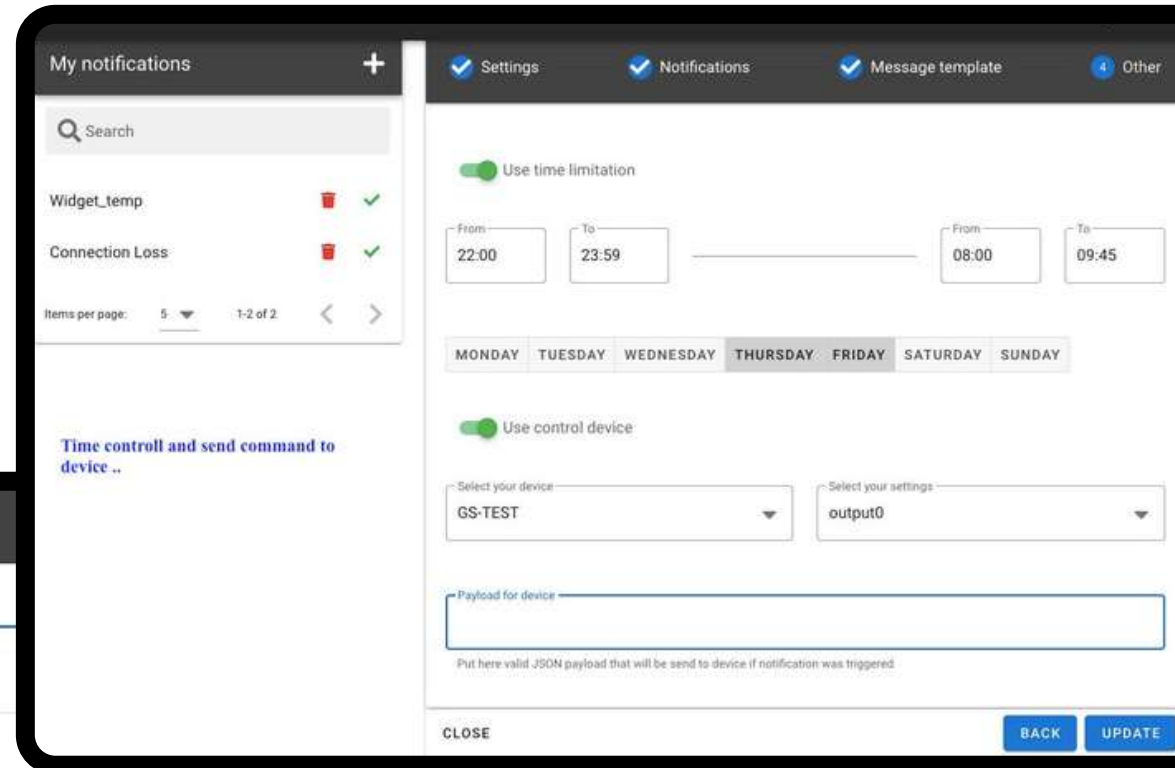
# Programable Notifications

Program your notifications to alert precise users at precise thresh hold levels. Provide action needed to be taken by the recipient up on receiving the notification and verify if the action was taken as specified.

## Triggered notifications



 TRIGGERED NOTIFICATIONS  HISTORY OF NOTIFICATIONS



	Created at	Viewed at
s offline	09.27.2020 13:46:30	09.28.2020 07:32:10
s offline	09.27.2020 13:47:00	09.28.2020 07:32:11
s offline	09.27.2020 13:48:00	09.28.2020 07:32:12
s offline	09.27.2020 13:48:40	09.28.2020 07:32:13
s offline	09.27.2020 13:58:40	09.28.2020 07:32:47
s offline	09.27.2020 13:59:50	09.28.2020 07:32:49
s offline	09.27.2020 14:00:30	09.28.2020 07:32:24
s offline	09.27.2020 14:02:20	09.28.2020 07:32:23



My notifications

Search

Widget\_Temp  

Connection Loss  

Items per page: 5 1-2 of 2

Time controll and send command to device ..

Settings Notifications Message template Other

Use time limitation

From 22:00 To 23:59 From 08:00 To 09:45

MONDAY TUESDAY WEDNESDAY THURSDAY FRIDAY SATURDAY SUNDAY

Use control device

Select your device: GS-TEST Select your settings: output0

Payload for device

Put here valid JSON payload that will be send to device if notification was triggered

CLOSE BACK UPDATE

Log of notification and action taken for post verification.

# Create Users and Share Dashboard

Created users with extensive access rights to be able to manage exactly the way you need.

The 'Edit user' form contains the following fields and values:

- Login: ysv\_mgr
- Password: [Empty]
- Core token: [Empty]
- Email: yasintha@vencesystem.com
- Role: manager
- Select timezone: +5:30
- Max. Dashboards: 0
- Max. Widgets: 1
- Max. Notifications: 1
- Max. Schedule reports: 1
- Max. Manager users: 1
- Max. Operator users: 1

Buttons: CANCEL, UPDATE

The 'Share dashboard' dialog box contains the following fields and values:

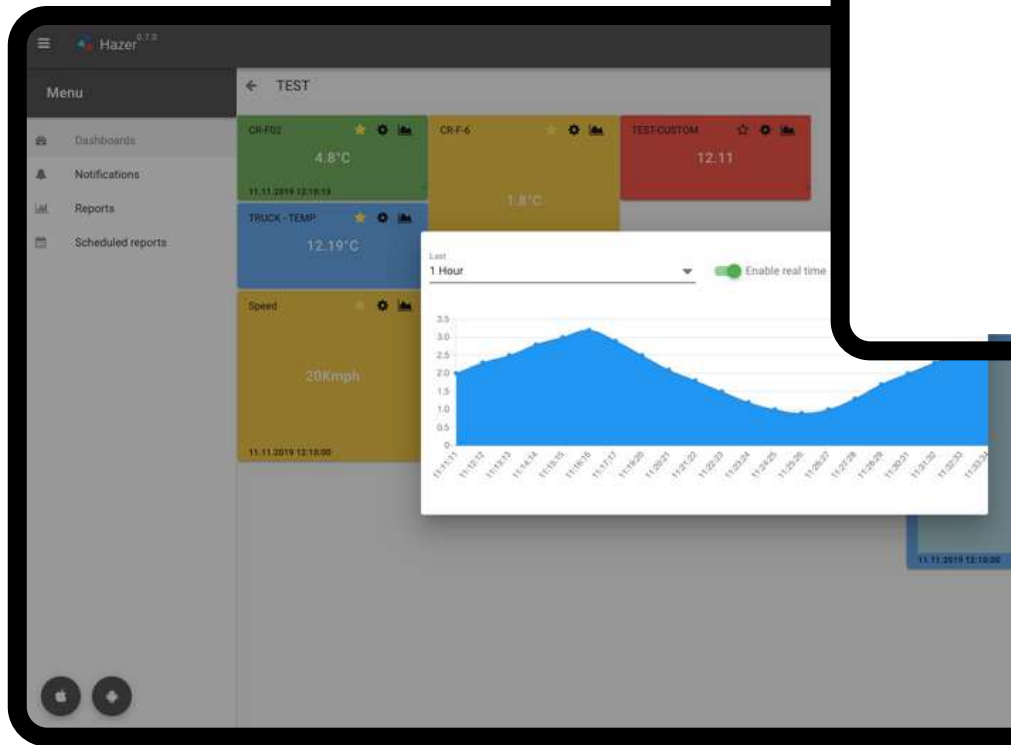
- Select dashboard: HZ-01
- Select user: ysv\_mgr

Buttons: CANCEL, SHARE

Share dashboards among users with access to required domains and managed access. Ideal way to share with customers to monitor their cargo.

# Reports & Graphical Representations

Real-time graphical representations on any view. Programmable reports to be able to generate and trigger automatically via email.



The screenshot shows the 'Notifications' page in the Hazer interface. It displays a 'Sensor tracing' table with the following data:

Device name	Sensor Name	Time
BDM-FRIDGES	CR-	2019-11-11 00:01:34
BDM-FRIDGES	CR-	2019-11-11 00:02:35
BDM-FRIDGES	CR-	2019-11-11 00:03:36
BDM-FRIDGES	CR-	2019-11-11 00:04:37
BDM-FRIDGES	CR-	2019-11-11 00:05:38

The screenshot shows the 'Notifications' page with two main sections. The 'My Scheduled' section lists three items: 'YSV-SCHEDULE-REPORT-TEST1', 'YSV-TEST-3', and 'YSV-SCHEDULE-REPORT-TEST2', each with a trash icon and a minus sign. The 'Update YSV-SCHEDULE-REPORT-TEST1 schedule' form includes the following fields:

- name: YSV-SCHEDULE-REPORT-TEST1
- Report type: Sensor tracing
- Select your widget: FRIDGE-1-I
- Choose file format: PDF
- Interval: Yesterday
- Write your emails: (empty text area)
- Execution Schedule: On Schedule
- Hours: 19
- minutes: 04
- Select week days: Monday, Tuesday, Wednesday, Thursday, Friday, Saturday, Sunday (all selected)
- Schedule is disable: (toggle off)
- CLOSE button



Stay connected:



[kloudip.com](https://kloudip.com)

Backed by



### **KLOUDIP INC**

3 Germay Dr, Unit 4 #4725, Wilmington,  
DE 19804.USA.

Phone: +1-201-448-8116

### **KLOUDIP (Private) Limited**

No. 1/8, 1st Lane, Bandaranayaka Avenue,  
Panadura 12500, Sri Lanka.

Phone: +94-11-212-7040

Email: [sales@kloudip.com](mailto:sales@kloudip.com)