



THE SOLUTION FOR FLEET MAINTENANCE CONTROL

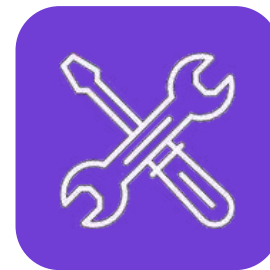
Planning. Management. Expenditure records.

SCOPE OF APPLICATION



PREVENTIVE MAINTENANCE

To discover breakdowns at an early stage: cut down repair expenses and the time spent at the service station



REPAIR

To know exactly what works are in progress, what spare parts are used, and how much it costs



OTHER WORKS

Car wash, routine inspection, and other minor works: consider all the time when the vehicle is idling and doesn't generate profit.

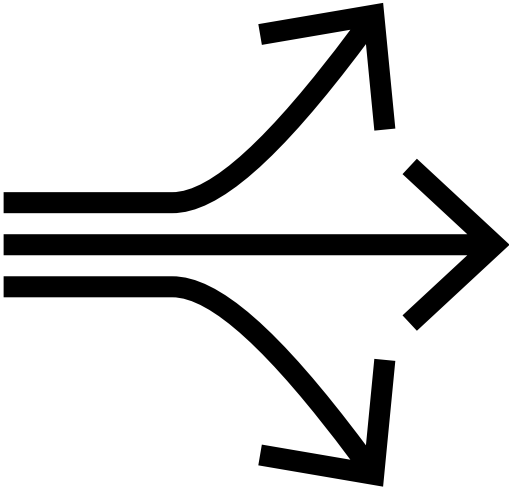


DOCUMENT MANAGEMENT

Make sure driving permits, insurance policies, vehicle inspection certificates, and other documents are up-to-date.



HEED USER PROFILE



COMPANY OWNER

Adds maintenance control to the portfolio



FLEET MANAGER/DISPATCHER

Automatically controls service works: without multipage Excel tables, paper registers, and card catalogs



VEHICLE OWNER

Automatically controls service works: without multipage Excel tables, paper registers, and card catalogs

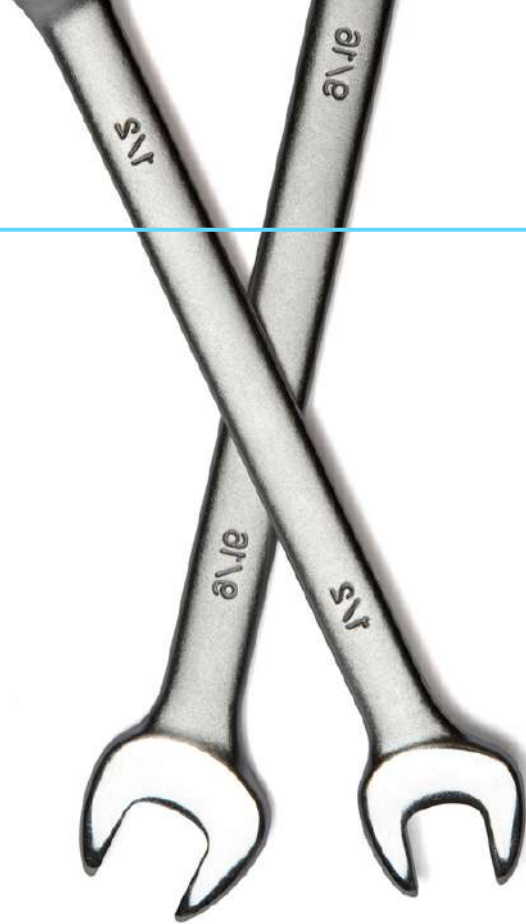


4 REASONS TO CONTROL MAINTENANCE



RARE

Critical breakdowns keep your fleets operating 100% of the time.



LONGER

Vehicle lifespan relieves you from buying new transport.



LOW-COST

Routine maintenance instead of costly critical breakdowns.



HEALTHY

Fleets spend less time under repair and more time working for you.



HOW HEED CHANGES BUSINESSES



KEEPS YOU INFORMED

Receive online notifications on the upcoming works and work progress to stay tuned.



INSPIRES COMPLEX APPROACH TO MAINTENANCE

Track all types of works, spare parts, and expenditures in one application – no more Excel and paperwork.



AUTOMATES PROCESSES

Create service work templates, assign them to a unit group, or adjust to individual vehicles in a few clicks.



SAVES THE HISTORY

Overview maintenance activities for each vehicle for up to 5 years.



SAVES YOUR MONEY

Track expenses on spare parts, maintenance works, car-care services, and documents to optimize the budget.

HEED CORE FEATURES



MAINTENANCE DASHBOARD

Overview real-time analytics and statistics on fleet health and costs.

NOTIFICATIONS

Receive alerts for upcoming and overdue service works.

LINE ITEM LIBRARY

Add all works and items to HEED to register maintenance in a click.

EXPENDITURE RECORDS & REPORTS

Let the system account for spare parts, service works, fuel, and vehicle utilization.



HOW IT WORKS: ACTIVATION AND ADMINISTRATION



1

GET STARTED: ACTIVATION

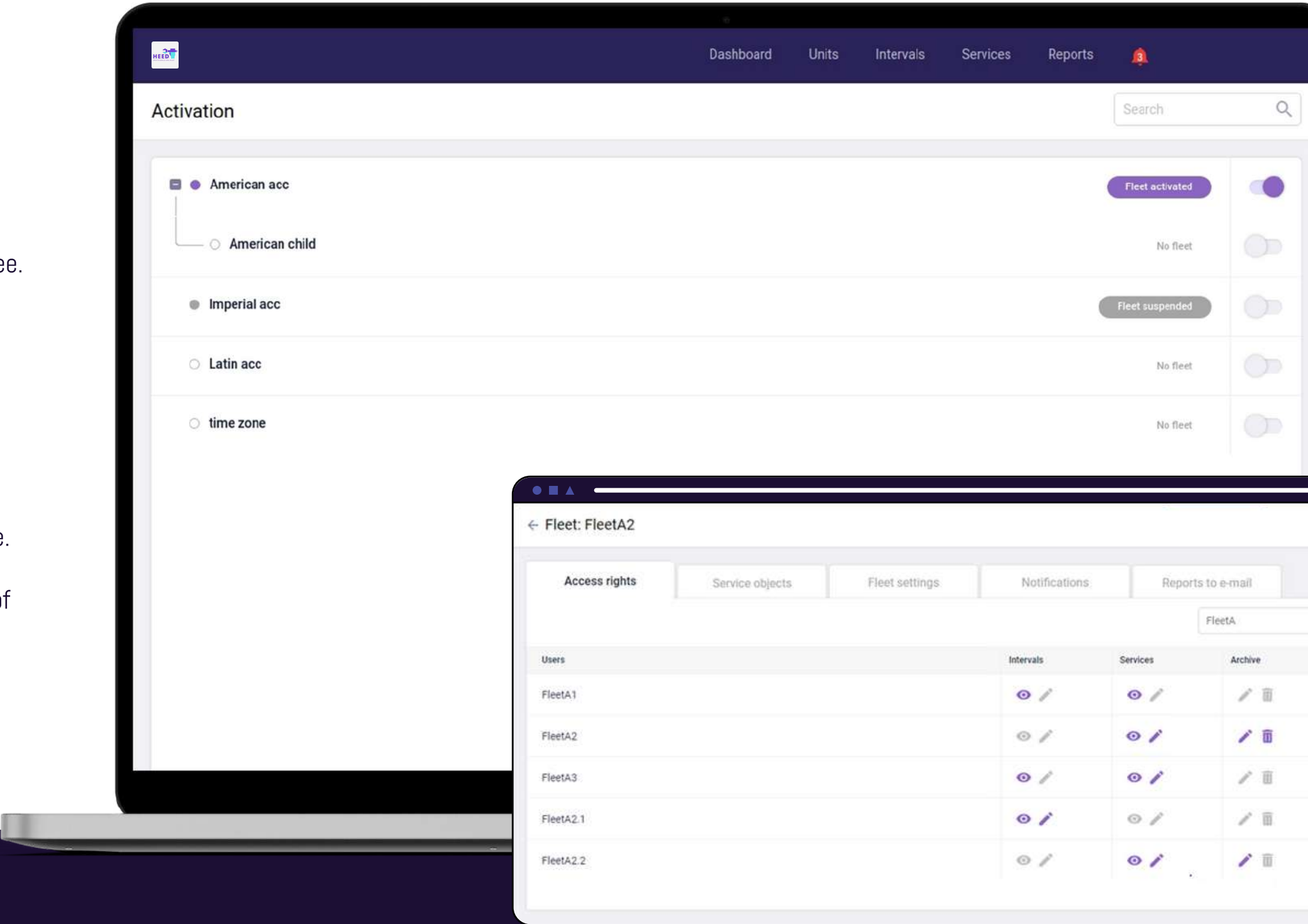
HEED allows creating accounts with different access rights for each employee involved in maintenance management.

Login to HEED and activate Fleets. Each Fleet may comprise all transport or only the vehicles supervised by a particular employee.

2

GET STARTED: ADMINISTRATION

- Protect your information with access rights: decide who can view and edit maintenance data.
- Create Fleets – groups of vehicles managed by each employee.
- Localize HEED: select a time zone, currency, and the system of measurements.
- Manage notifications: select the events you want to monitor, edit alert text, and configure notification channels.



HOW IT WORKS: DASHBOARD



4

A SINGLE SCREEN FOR ALL YOUR MAINTENANCE DATA

- **Statistics**

The number of vehicles and drivers that work vs. those idling at the service station. The former make the profit while the latter pump out the money.

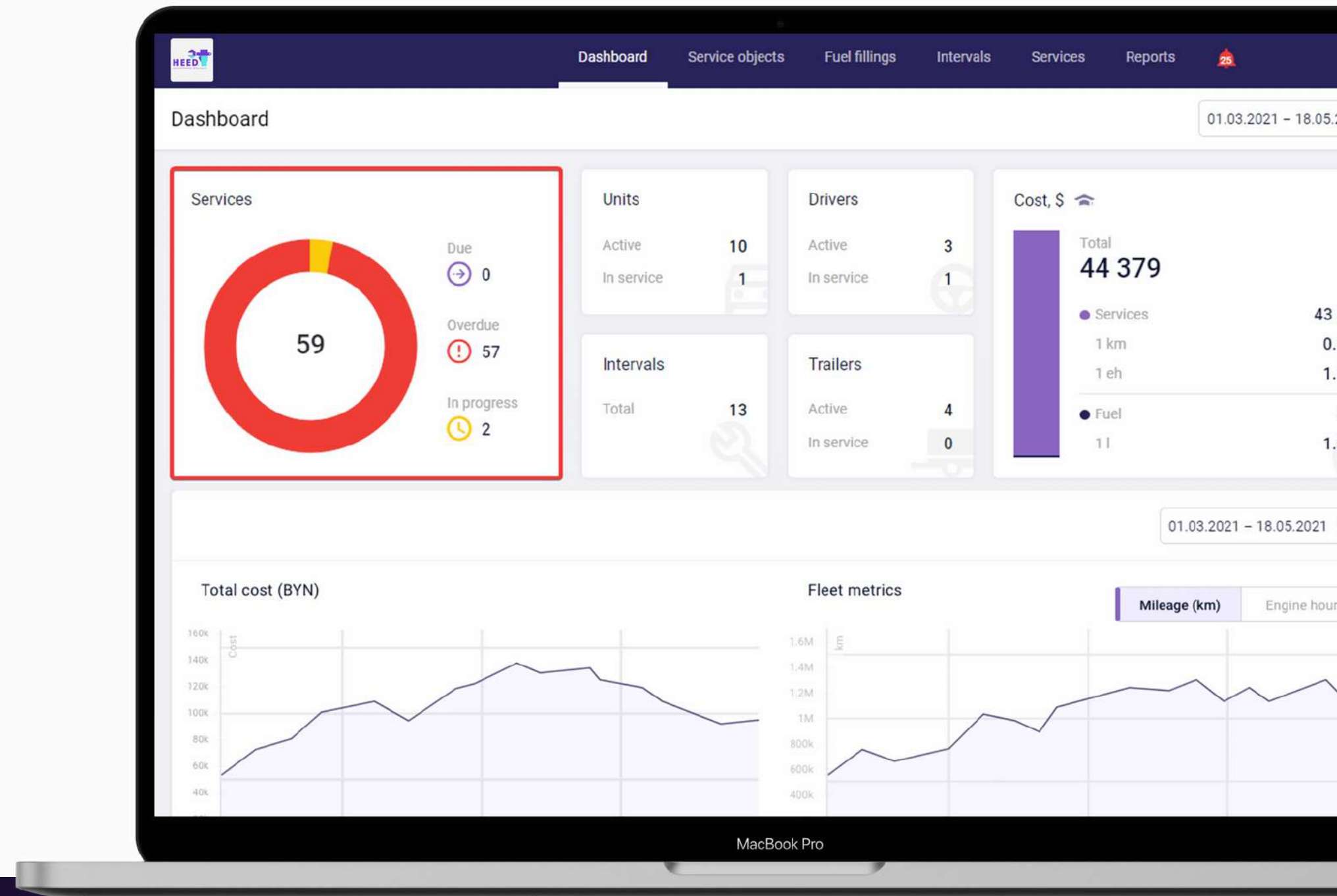
- **Services**

Due, in progress, and overdue. Plan your work taking into account how many vehicles will be unavailable in the short run.

- **Fleet maintenance costs**

Including the cost per 1 km, engine hour, and fuel expenses.

*Track expenses in dynamics and compare vs. mileage or engine hours. Is there any correlation? Or do vehicles get broken not even leaving the fleet yard?



HOW IT WORKS: "UNITS" TAB



5

DATA ON MILEAGE, ENGINE HOURS, AND SERVICES OF ALL VEHICLES IN THE LIST AND COMPLETE INFORMATION ON EACH:

- **"Cost per 1 km" parameter**

Shows the most expensive vehicles in terms of maintenance.

- **Location**

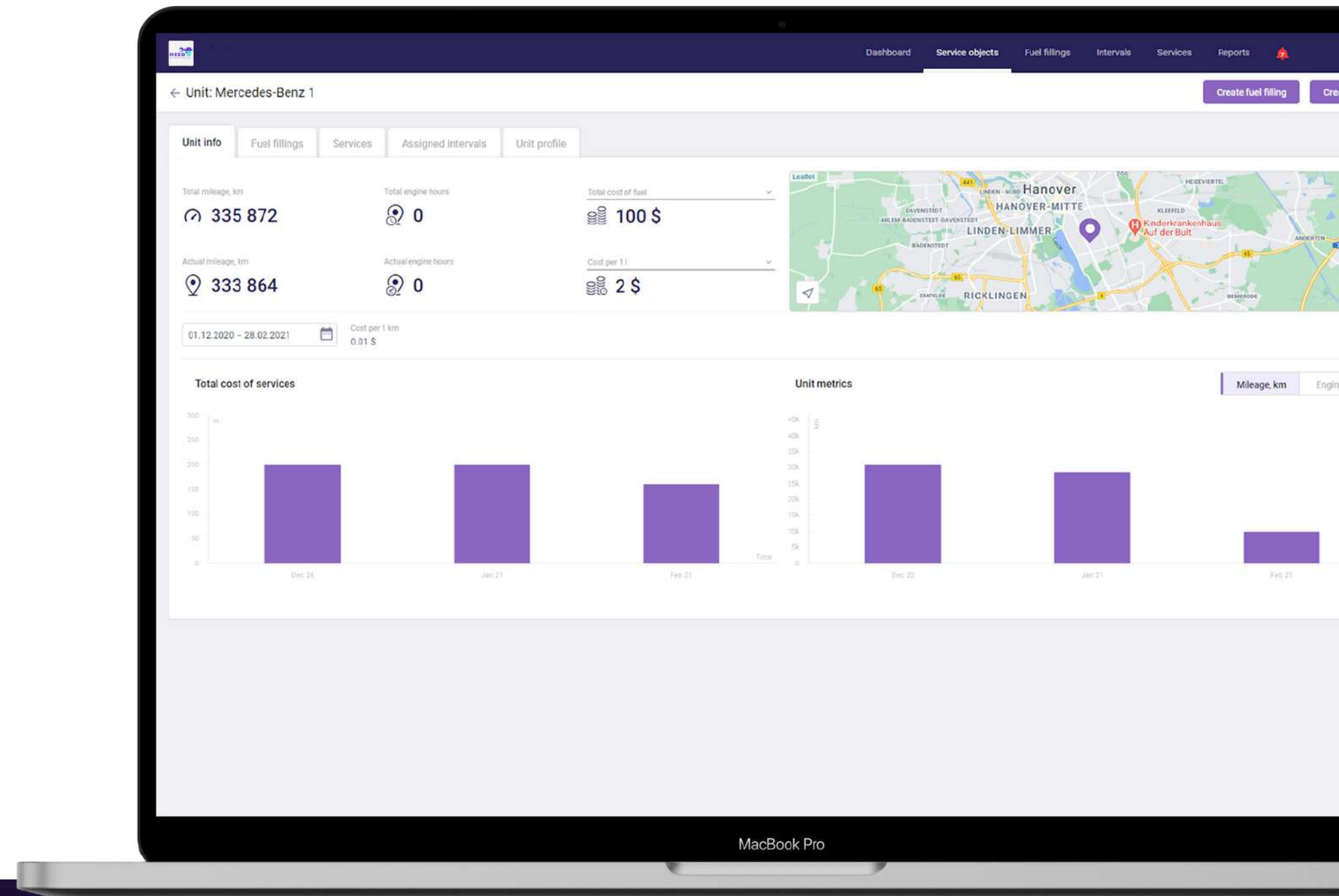
On the map lets you check if the vehicle is at the right service station.

- **Services and Intervals**

Display works, spare parts, expenditures, and deadlines for each vehicle.

- **Unit profile**

Comprises a detailed description of the vehicle, for example, registration certificate data, VIN, vehicle type, etc.



HOW IT WORKS: SERVICES



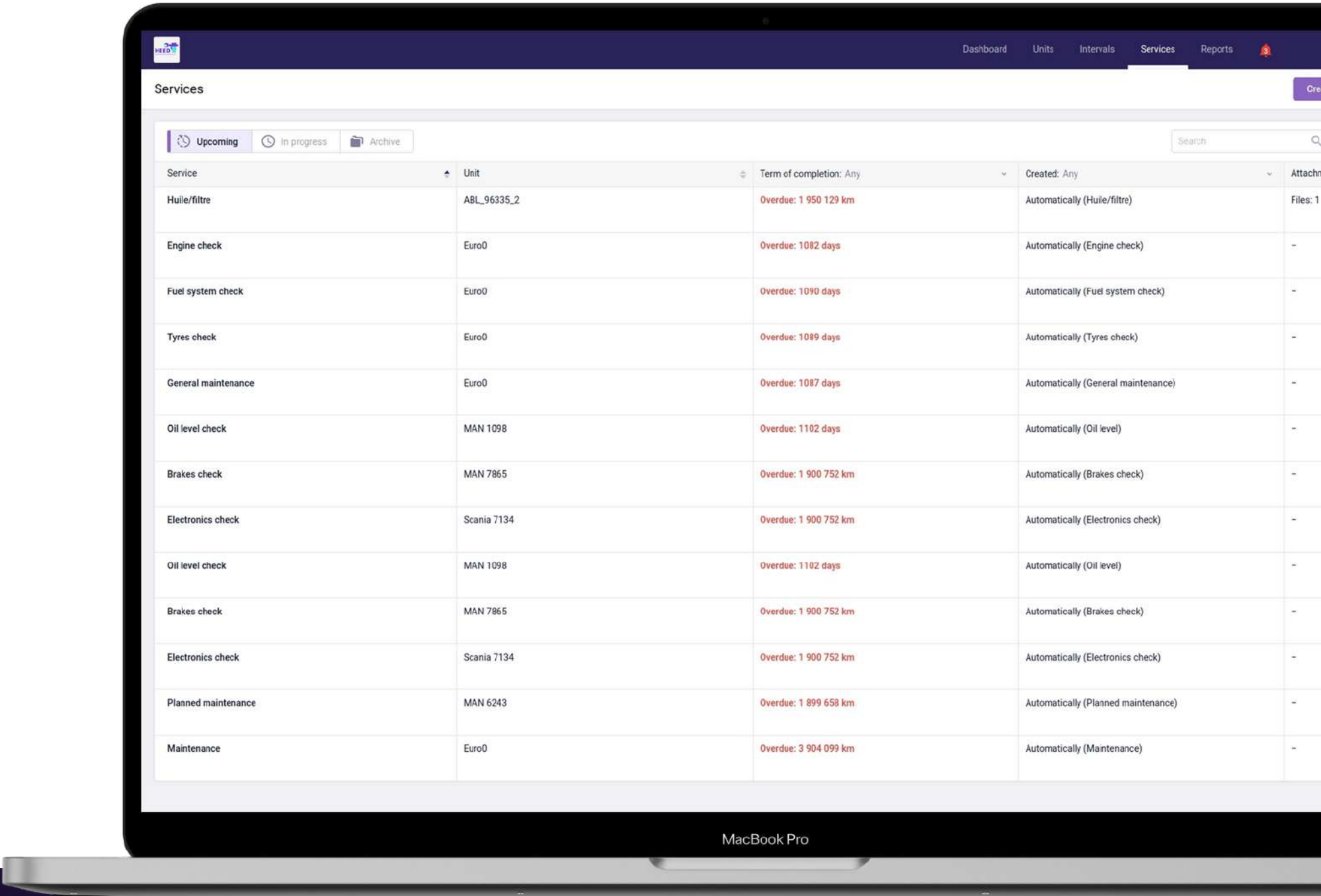
6

A Service is a set of works scheduled for a vehicle: what to do and when, what spare parts to use, how much does it cost, and what is the expected outcome.

A Service shows that works are about to start or that the transport is already at the service station. The core function of the Service is to register maintenance activities for vehicles in the system.

HOW TO USE IT?

- Schedule the “Oil change” Service for November 14, for example.
- On November 12, HEED will change its status to “Upcoming” and alert you about it.
- Contact a service station, register the vehicle, and notify the driver.
- On the oil change day, you change the status to “In progress.”
- After the oil change, you change the status to “Closed.”
- HEED shows all works & expenditures in reports and statistics.
- Attach bills or document scans to the Service.



HOW IT WORKS: INTERVALS



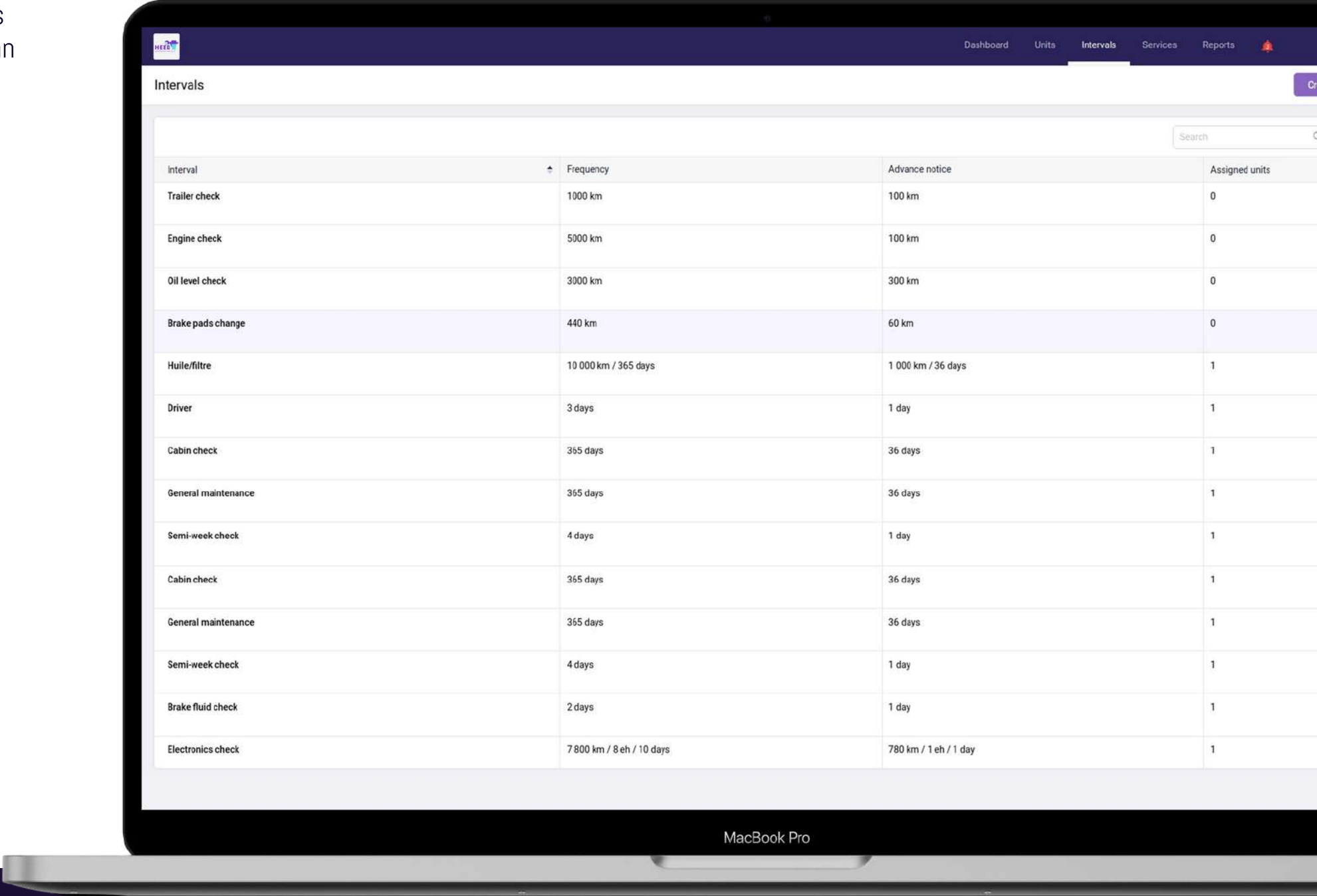
7

An Interval is a template, where you can indicate a set of service works and their frequency for a particular vehicle type or group. At due time, an Interval will automatically create a Service and notify you about it.

For example, you defined the spare parts, costs, scope, and frequency of service works for all your trucks. You can specify them all in an Interval and apply it to all your trucks in a few clicks.

3 WAYS TO AUTOMATICALLY ASSIGN SERVICE WORKS TO A VEHICLE:

- Time-based. An Interval activates a Service "every 24 hours, 7 days, monthly, annually" or at the exact date. It's a perfect option to automate routine inspections.
- Mileage-based. An Interval activates a Service after a certain number of kilometers driven. For example, an Interval can activate the "Tire change" Service every 50,000 km.
- By engine hours. The best option for construction machinery maintenance management. For example, in 250 engine hours, HEED will activate the "Maintenance" Service for the tower crane.



HOW IT WORKS: LINE ITEM LIBRARY AND ALERTS



8 NOTIFICATIONS

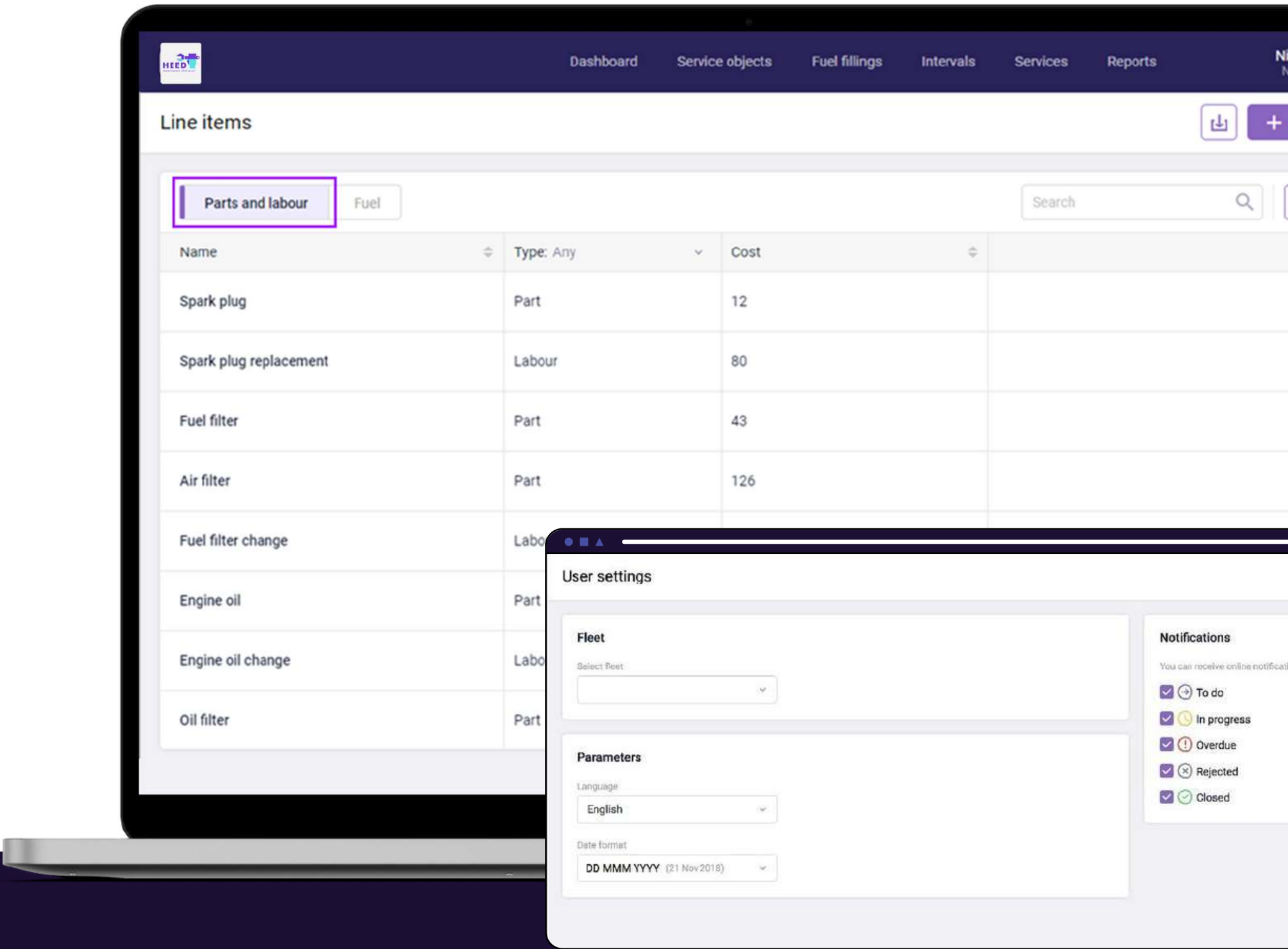
Notifications keep you updated on all the Services: new and overdue, closed and rejected.

Instantly see what happens and click the pop-up window to overview the Service itself – double-check, edit, change the status, or just make sure everything is ok.

9 LINE ITEMS

Manage all your expenditures in the “Line items” library. Add spare parts, works, fuel, and their prices. All the items and their costs become available when you create a Service or Interval and simplify expense management.

*For example, you pay \$100 to change tires of a 9-ton Scania, plus \$300x4 for the tires themselves. Save this data in the library and use it for similar trucks. If the cost rises, correct one figure to update expenses for all vehicles.



HOW IT WORKS: REPORTS AND STORAGE



10 REPORTS

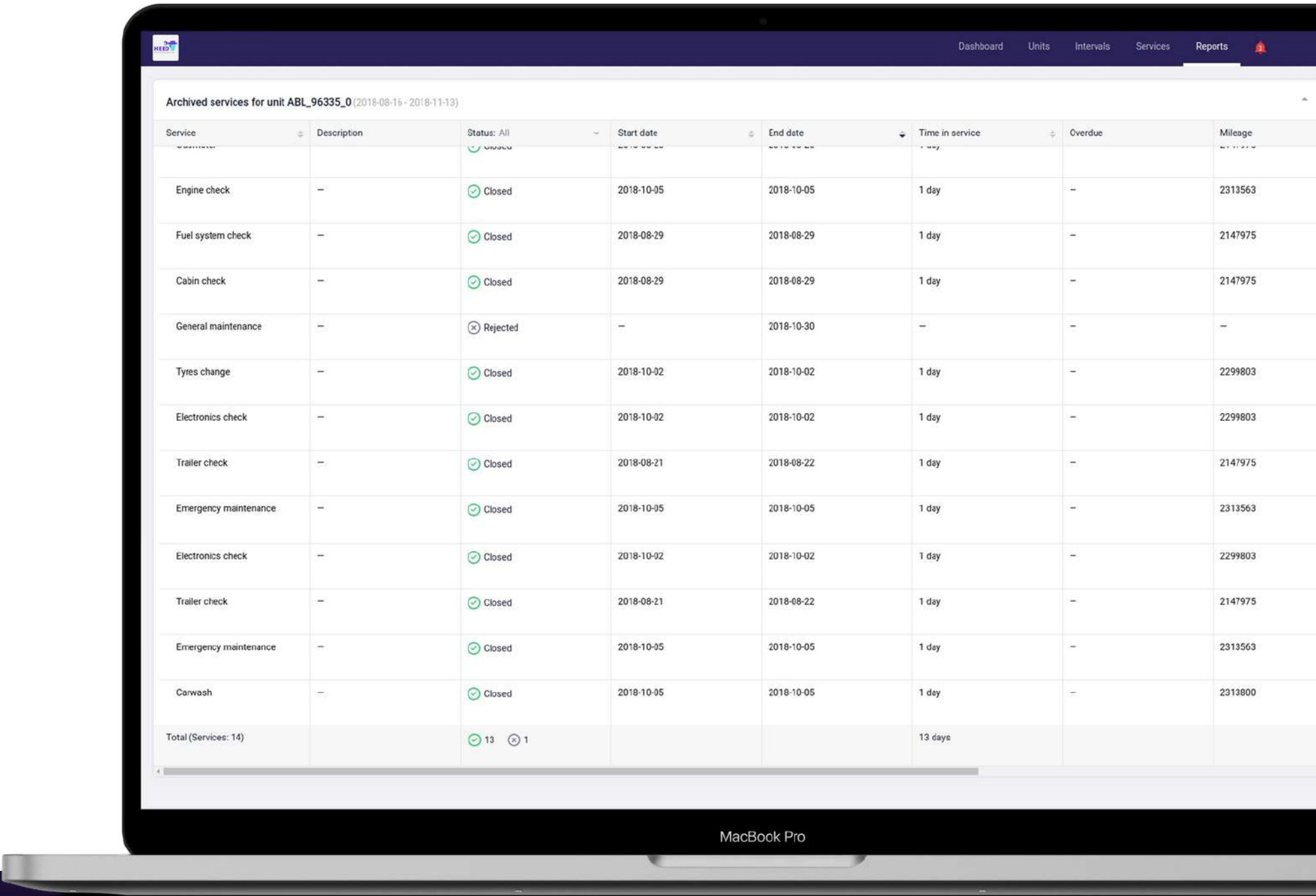
In HEED, we offer preset reports without any unneeded information. We kept the parameters attributed to maintenance only:

- archived services;
- the correlation of closed, rejected, and overdue services;
- the total cost;
- etc.

One-click export to a file is available for all types of reports.

11 STORAGE

HEED stores the data on all fulfilled Services for all vehicles in the system. Access it in one click from anywhere, anytime, for up to 5 years!



P.S. WATCH HEED IN ACTION. EASY AS 1-2-3



THANKS FOR WATCHING

FIND MORE FLEET MANAGEMENT APPS ON KLOUDSKY

